

TO: WMI Authorized Dealers

FROM: White Mountain Imaging, Technical Support

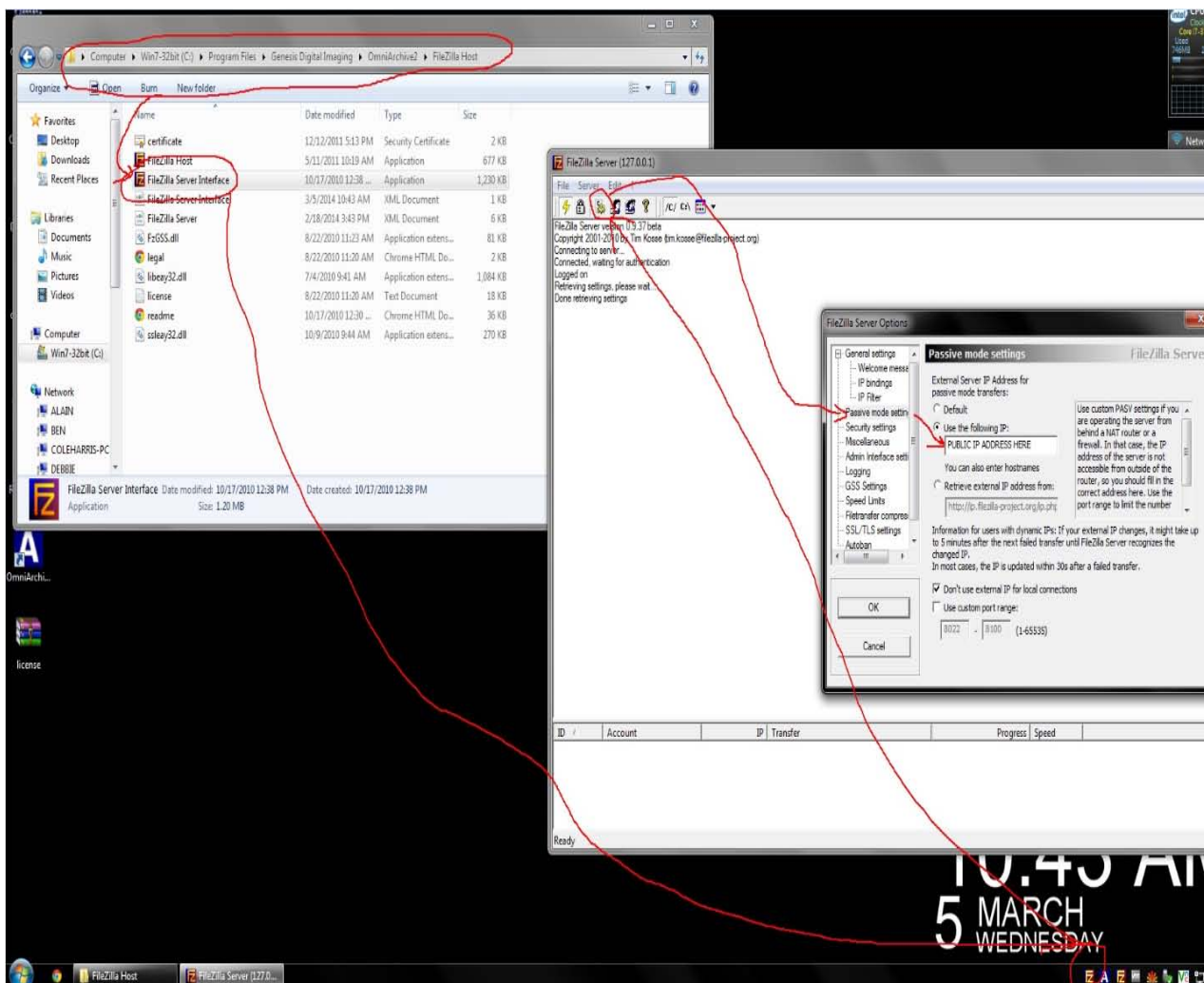
DATE: 09.25.2014

SUBJECT: Configure OmniVue Web for OmniArchive2

Product: OmniVue Web for OmniArchive2

Resolution:

1. Install OmniVue with latest patch.
2. On facilities router, forward ports 8022 – 8100 to IP address of the OmniArchive
3. On the OmniArchive open “FireZilla” and make the changes below:

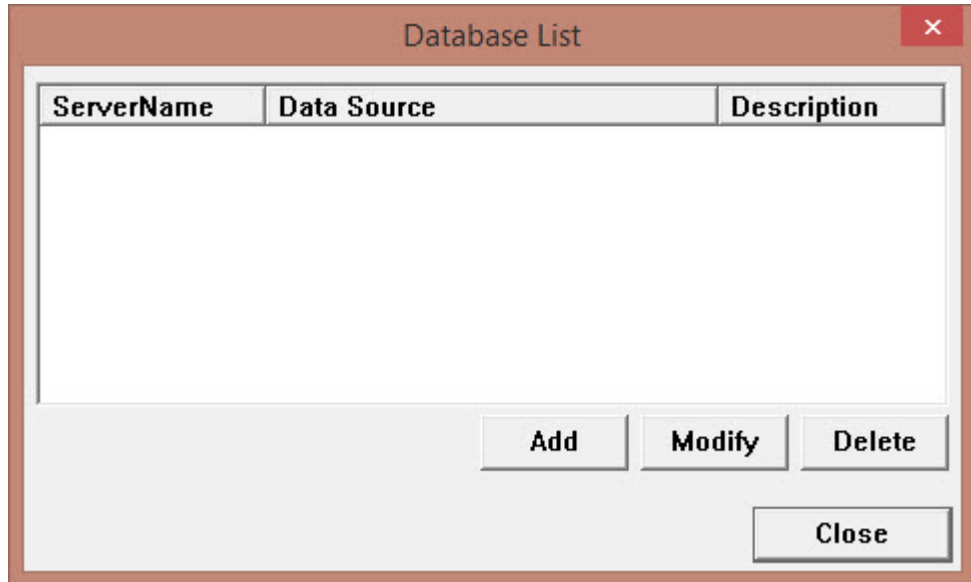


Service Bulletin

- 4. Launch OmniVue on client pc
- 5. At login screen click on server list



- 6. Click on Add



- 7. Check box for:

I don't see my server on the list. Click here to manually configure a connection.



8. Add Server Name, check OmniArchive2(Secured) and add server IP and Port 8001

Remote Server

Please select your server on the list.

Remote Server List	

Server Name:

I don't see my server on the list. Click here to manually configure a connection.

Server Type: OmniArchive(Unsecured) OmniArchive2(Secured)

IP Address: Port

9. Click "Add" then "Close"

10. Be sure OmniArchive is listed in "Database" Drop Down and log in to OmniVue with password "genesis"

11. Uncheck date boxes and click search to populate worklist.

