

Registration Number ECN-001828
Revision Number 1st
Subject DR-ID 1270: Procedure for Installing FPGA onto the New-FPGA-Memory-Equipped SE

Date 2019/12/23
Department Medical Systems Business Division
Originator TOMOHIRO NISHINO
Edited by NAKO SHIMOKAWA
Approved by KATSUNAO NISHI

Affected Products

DR-ID1270

Scope of Application**Content****Applicable To (Serial Nos. Etc.)**

DR-ID127xSE

Design Change Reason

Specification/Function Change

Content**Action**

Not Required (information only)

Content**Time Frame**

Other

Content

Perform the procedure in this ECN when the MC software version is V16.7 or earlier and the RMV board or the SE has been replaced.

Completion Deadline

N/A

Notes**Estimated Work Time**

Implementation H
Completion H

Charge

Not Applicable

Affected Documents

No

Content

Description Of Change**Content**

This ECN provides information related to the change of FPGA memory type in the RMV65A and RMV66A boards for DR-ID127xSE due to discontinuation of parts.

Supply Of The Parts

Yes

When

With this ECN

Name/Code

FlashUpdate.zip

Quantity

Download from SIAS

Return Of The Replaced Parts To FUJI

No

Special Tools / Instruments

No

Content

Details

To use a new-FPGA-memory-equipped SE with MC software V16.7 or earlier, use the jig software (FlashUpdate.zip) provided with this ECN. The jig software can be used with Windows 7 and 10.

This ECN explains the following:

- Applicable SEs
- Applicable service parts (RMV65A and RMV66A)
- FPGA software installation procedure by using the jig software

*For details, see the following explanation.

(For US Only)C&R Assessment

The action does not meet the definition of Correction and/or Removal under part 806.

Remark

The action does not meet the definition of correction and/or Removal under part 806, since it has no influence on existing equipment.

SIAS Published

WW

Content

Procedure for Installing FPGA onto the New-FPGA-Memory-Equipped SE

1. Applicable model

DR-ID127xSE

MC software version is V16.7 or earlier and the RMV board or the SE has been replaced.

2. Scope

<Applicable SEs>

Serial numbers of applicable SEs will be informed separately as soon as they are determined.

Applicable FPGA versions of SEs are as follows.

The FPGA version can be checked via DR Maintenance Software.

- 1) 1271SE fpgaRmv ver: 0x0085 or later
- 2) 1272SE fpgaRmv ver: 0x00A5 or later
- 3) 1273SE fpgaRmv ver: 0x0095 or later
- 4) 1274SE fpgaRmv ver: 0x00B5 or later
- 5) 1275SE fpgaRmv ver: 0x00BD or later

<Applicable service parts>

Service part numbers for RMV65A and RMV66A equipped with the new FPGA memory are shown in the table below. The numbers have been changed from the previous ones.

* Current service parts are discontinued.

Type	Current service part number	New service part number (for the new-FPGA memory-equipped part)
RMV65A for DR-ID1270 supplied as a service part	857Y120057	857Y200090
RMV66A for DR-ID1270 supplied as a service part	857Y120105	857Y200091

3. FPGA software installation procedure by using the jig software

Check of the action to perform

Check the installed MC software version. Then, perform the appropriate action explained in the table below:

<MC versions and actions>

MC version	Action
V17.1 or later	No action is needed.
V16.7	Upgrade the MC to V17.1 or later. If version upgrade is impossible, no action is needed.
V15.1 to V16.6	Upgrade the MC to V17.1 or later. If version upgrade is impossible, install the FPGA by using the jig software.
Earlier than V15.1	Upgrade the MC to V17.1 or later. The jig software cannot be used for MC earlier than V15.1.

FPGA software installation procedure by using the jig software

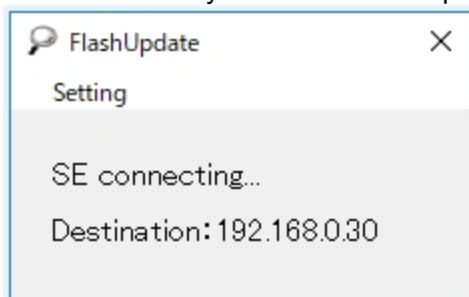
<Preparation>

* When replacing the board with the new-FPGA-memory-equipped service part, perform the board replacement procedure up to the step for inputting the SE serial ID as usual.

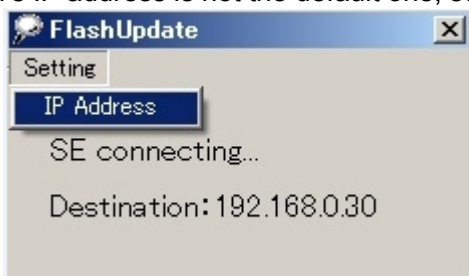
- (1) Check of MU software version
Check the MC software version by using DR Maintenance Software. Then, if it is necessary to install the FPGA by using the jig software, refer to "Procedure for using the jig software" explained below.
- (2) Preparation of jig software
Decompress the provided **FlashUpdate.zip** and copy the FPGAUpdate folder to the desktop.
- (3) Make sure that the MC Manager software has not started up.
- (4) Connect the SE cable to the applicable panel.

<Procedure for using the jig software>

- (1) Double-click on the jig software execution file FlashUpdate.exe.
When the above file is executed, the firewall block message may appear. In such a case, check **Permission** and click **Allow access**.
- (2) Specifying the panel IP address
The window below appears. When the panel IP address is the default one (192.168.0.30), the jig software is automatically connected to the panel and the next window appears.



If the panel's IP address is not the default one, select **IP Address** from **Setting**.

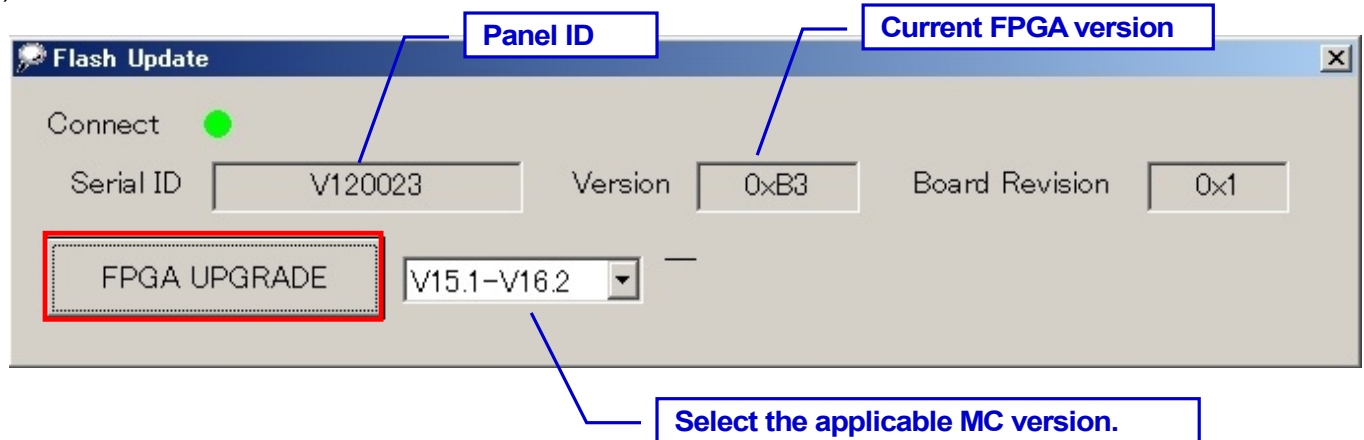


In the IP Address Setting window, enter the panel's IP address and click **Close**.

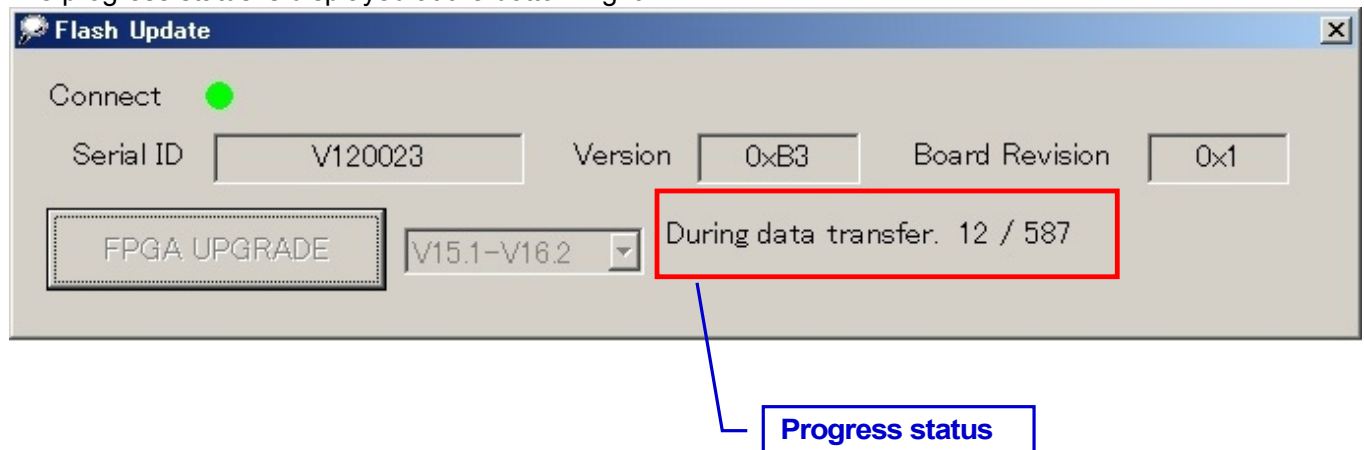


When the jig software is connected to the panel, the next window automatically appears.

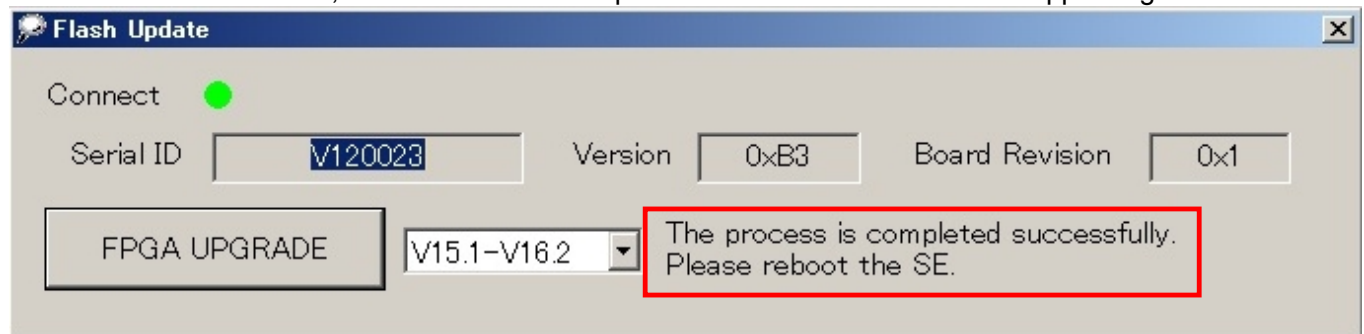
(3) Installation of FPGA software



Check the displayed information and click **FPGA UPGRADE**.
The progress status is displayed at the bottom right.



After about seven minutes, the installation is completed with the information below appearing.



Click to end the jig software.

<Check procedure>

- (1) Reboot the panel.
- (2) Start MC Manager.
- (3) Make sure that the version displayed in the SE software version upgrade window of DR Maintenance Software is the same as the version of the installed FPGA. Upgrade other software versions (CPU, GLG, MCU, PIC) as needed.
- (4) Perform the procedure explained in "IN: Checking for Image Problems" in the Service Manual. If an artifact is found in the image check process, perform the calibration and then procedure in "Checking for Image Problems" again.

End